

# MCS-710

## Fully Wireless Siren



## Installation Instructions

### 1. INTRODUCTION

The MCS-710 is an indoor or outdoor fully wireless siren, designed for installation in areas in which wiring action is difficult or impossible. There is no need for an external power supply. The MCS-710 is powered by an internal non-chargeable battery.

The siren communicates with the PowerMax+, PowerMax Pro or PowerMax LE. When an identified activation command is received from the control panel, the siren activates its sounder, activates its flash lights and acknowledges its activation to the alarm system.

The MCS-710 and the control panel should be located in the same house.

#### MCS-710 Features

- Designed for indoor or outdoor use**  
 The siren has double plastic cover for extra protection against rain and sun.
- Distinguishable siren fire and burglar alarms**  
**Fire alarm:** Alternating on/off alarm sound.  
**Burglary alarm:** Continuous high/low tone sweep.  
**Note:** The siren is activated for a predefined "Bell Time" (refer to PowerMax+ / PowerMax Pro / PowerMax LE installer guide, par. 4.4) according to local authorities requirements. After this period, the siren sound stops.
- Squawk indications**  
 By using a keyfob, High, mid or low siren squawk (beep) sounds can be used to indicate arming (1 squawk) and disarming (2 squawks) of the PowerMax+ / PowerMax Pro / PowerMax LE (as described in the user's guide section 7).
- Flash lights**  
 The siren includes 6 flash lights that are activated as follows:  
 When an identified activation command is received from the control panel, the siren starts sounding for a predetermined time (set by the PowerMax+ / PowerMax Pro / PowerMax LE "4. DEFINE PANEL", "04: BELL TIME" menu). (The siren sound can be stopped by the disarming the control panel). After the siren sounding period (if the alarm system is not disarmed) the siren lights flash once every 1 second (0.1 second ON, 0.9 second OFF) for a period of 20 minutes, or until the alarm system is disarmed.
- Triple Tamper protection**  
 3 tamper switches are included; one under the front cover, second touching the mounting surface and third attached to the closure screw.

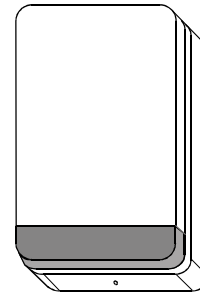


Figure 1 - External View

- Non-rechargeable 3.6V Lithium battery**  
 When the battery voltage is low, low battery message is sent to the alarm control system. After the low voltage message delivery, at least 2 siren alarms will be possible before the siren will be totally inactive.
- 2-way full supervision**  
 The siren is a fully supervised, 2-way communication device. It includes a receiver, to receive activation commands from the alarm system, and a transmitter, to periodically transmit its status signal to the alarm system.  
 The transmitted signal strength can be measured during the installation (refer to PowerMax+ / PowerMax Pro / PowerMax LE installer guide, paragraph 5.2 – Diagnostic Test).
- Self-test feature**  
 Upon pressing the MCS-710 self test switch for 3 seconds, the siren functional check is performed (low level sounds and flash lights indicate that that siren is serviceable).

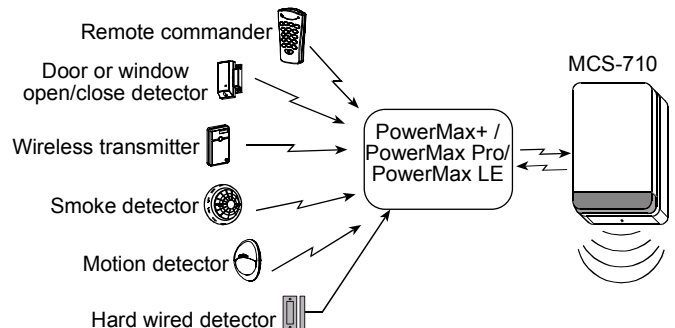


Figure 2- Integration with the Alarm System

**Note:** When the PowerMax+ / PowerMax Pro / PowerMax LE is no longer used, or its power is switched off for a long period, the siren's internal battery should be removed to preserve battery life.

### 2. SPECIFICATIONS

**Siren Type:** Piezo, 100dB min. SPL @ 1m, 1.8-3.5 kHz, sweep frequency 7Hz

**Internal Battery:** 3.6V non-rechargeable Lithium battery, EEMB type ER34615M

**Battery life expectancy:** 3 years (for typical use)

**Operating Frequency (MHz):** 315, 433.92, 868.95, or other frequency according to the requirement in the country of use.

**Receiver and Transmitter ID Type:** 24-bit

**Flash Lights Duration:** 100ms ON, 900ms OFF

**Dimensions (LxWxD):** 30 x 19 x 7 cm (11-13/16 x 7-1/2 x 2-3/4 in)

**Weight:** 982g (34.6 oz.)

**Operating Temperature:** -30°C to 70°C (-22°F to 158°F)

**Compliance with Standards:** EN 50131-1 Grade 2 Class II

### 3. INSTALLATION, TESTING AND ENROLLING

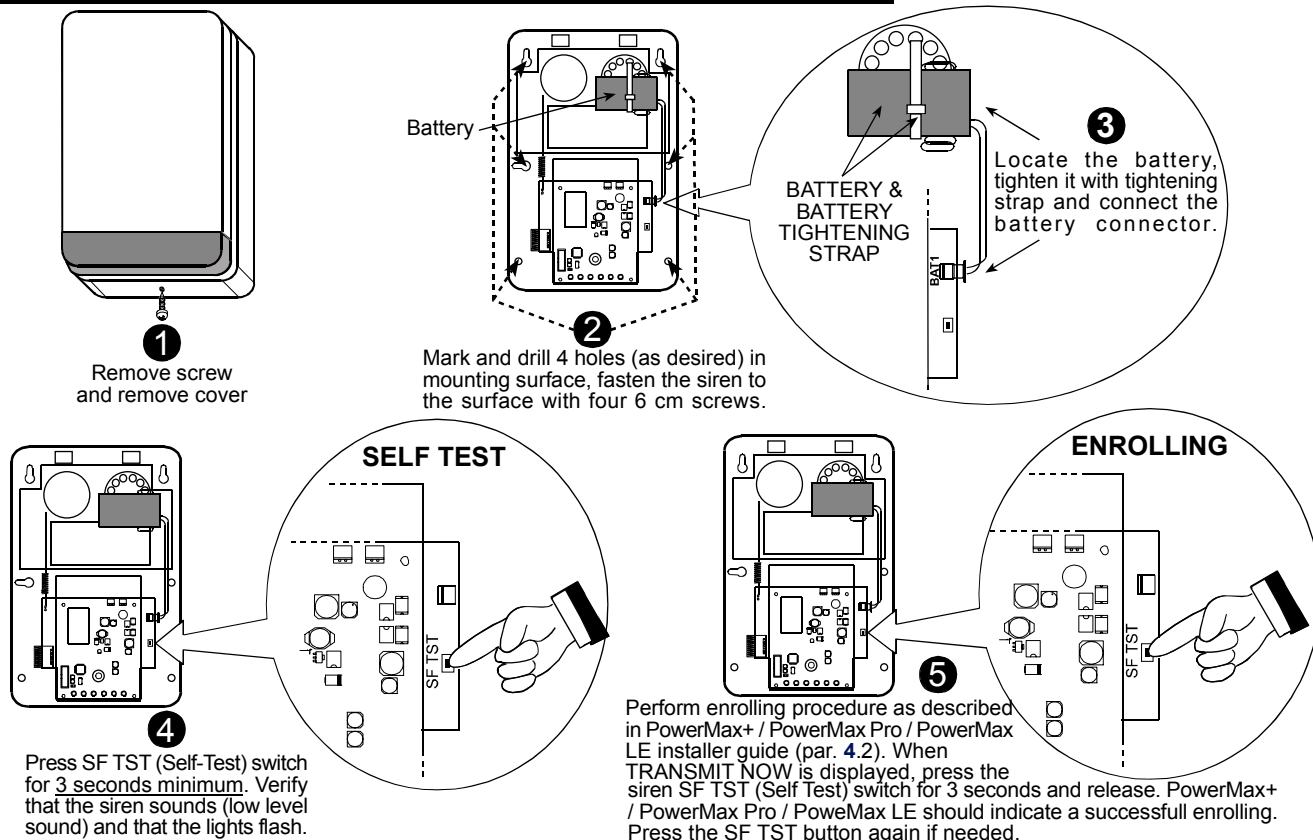


Figure 3 – Installation, Testing and Enrolling

**Notes**

- a. Pressing the Self-Test switch for 3 seconds is used for testing the siren (by using low level sound) and its flash light.
- b. Pressing the Self-Test switch for 3 seconds is used to enroll the siren in the PowerMax+ / PowerMax Pro / PowerMax LE memory (The alarm control system must recognize the siren's unique identification code for command delivery and supervision).
- c. After the enrolling, close the siren's cover and perform DIAGNOSTIC TEST, as described in PowerMax+ / PowerMax Pro / PowerMax LE installer guide par. 5.2.
- d. Enrolling cancellation, if required, is described in the PowerMax+ / PowerMax Pro / PowerMax LE Installer Guide.
- e. Before removing the siren from the mounting surface, enter the alarm system Installer Mode, enter Installer Code and Perform siren enrollment cancellation in the alarm control system. Now you can remove the siren without causing an alarm.

**Interference Prevention**

This device complies with FCC Rules Part 15. Operation is subject to two conditions: (1) This device may not cause harmful interference, and (2) this device must accept any interference that may be received or that may cause undesired operation.

The digital circuit of this device has been tested and found to comply with the limits for a Class B digital device, pursuant to Part 15 of the FCC Rules. These limits are designed to provide reasonable protection against harmful interference in residential installations. This equipment generates, uses and can radiate radio frequency energy and, if not installed and used in accordance with the instructions, may cause harmful interference to radio and television reception. However, there is no guarantee that interference will not occur in a particular installation. If this device does cause such interference, which can be verified by turning the device off and on, the user is encouraged to eliminate the interference by one or more of the following measures:

- Re-orient or re-locate the receiving antenna.
- Increase the distance between the device and the receiver.
- Connect the device to an outlet on a circuit different from the one which supplies power to the receiver.
- Consult the dealer or an experienced radio/TV technician.

Changes or modifications not expressly approved by Visonic Ltd. could void the user's authority to operate the equipment.

**WARRANTY**

Visonic Ltd. and/or its subsidiaries and its affiliates ("the Manufacturer") warrants its products hereinafter referred to as "the Product" or "Products" to be in conformance with its own plans and specifications and to be free of defects in materials and workmanship under normal use and service for a period of twelve months from the date of shipment by the Manufacturer. The Manufacturer's obligations shall be limited within the warranty period, at its option, to repair or replace the product or any part thereof. The Manufacturer shall not be responsible for dismantling and/or reinstallation charges. To exercise the warranty the product must be returned to the Manufacturer freight prepaid and insured.

This warranty does not apply in the following cases: improper installation, misuse, failure to follow installation and operating instructions, alteration, abuse, accident or tampering, and repair by anyone other than the Manufacturer.

This warranty is exclusive and expressly in lieu of all other warranties, obligations or liabilities, whether written, oral, express or implied, including any warranty of merchantability or fitness for a particular purpose, or otherwise. In no case shall the Manufacturer be liable to anyone for any consequential or incidental damages for breach of this warranty or any other warranties whatsoever, as aforesaid.

This warranty shall not be modified, varied or extended, and the Manufacturer does not authorize any person to act on its behalf in the modification, variation or extension of this warranty. This warranty shall apply to the Product only. All products, accessories or attachments of others used in conjunction with the Product, including batteries, shall be covered solely by their own warranty, if any. The Manufacturer shall not be liable for any damage or loss whatsoever, whether directly, indirectly, incidentally, consequentially or otherwise, caused by the malfunction of the Product due to products, accessories, or attachments of others, including batteries, used in conjunction with the Products.

The Manufacturer does not represent that its Product may not be compromised and/or circumvented, or that the Product will prevent any death, personal and/or bodily injury and/or damage to property resulting from burglary, robbery, fire or otherwise, or that the Product will in all cases provide adequate warning or protection. User understands that a properly installed and maintained alarm may only reduce the risk of events such as burglary, robbery, and fire without warning, but it is not insurance or a guarantee that such will not occur or that there will be no death, personal damage and/or damage to property as a result.

The Manufacturer shall have no liability for any death, personal and/or bodily injury and/or damage to property or other loss whether direct, indirect, incidental, consequential or otherwise, based on a claim that the Product failed to function. However, if the Manufacturer is held liable, whether directly or indirectly, for any loss or damage arising under this limited warranty or otherwise, regardless of cause or origin, the Manufacturer's maximum liability shall not in any case exceed the purchase price of the Product, which shall be fixed as liquidated damages and not as a penalty, and shall be the complete and exclusive remedy against the Manufacturer.

**Warning:** The user should follow the installation and operation instructions and among other things test the Product and the whole system at least once a week. For various reasons, including, but not limited to, changes in environmental conditions, electric or electronic disruptions and tampering, the Product may not perform as expected. The user is advised to take all necessary precautions for his /her safety and the protection of his/her property.

6/91



**W.E.E.E. Product Recycling Declaration**

For information regarding the recycling of this product you must contact the company from which you originally purchased it. If you are discarding this product and not returning it for repair then you must ensure that it is returned as identified by your supplier. This product is not to be thrown away with everyday waste. Directive 2002/96/EC Waste Electrical and Electronic Equipment.



VISONIC LTD. (ISRAEL): P.O.B 22020 TEL-AVIV 61220 ISRAEL. PHONE: (972-3) 645-6789. FAX: (972-3) 645-6788  
 VISONIC INC. (U.S.A.): 65 WEST DUDLEY TOWN ROAD, BLOOMFIELD CT. 06002-1376. PHONE: (860) 243-0833, (800) 223-0020 FAX: (860) 242-8094  
 VISONIC LTD. (UK): FRASER ROAD, PRIORY BUSINESS PARK, BEDFORD MK44 3WH. PHONE: (0870) 7300800 FAX: (0870) 7300801  
 INTERNET: www.visonic.com

©VISONIC LTD. 2007 MCS-710, DE5421- (REV. 3, 1/07)

